

Gat No.1209,  
Near Hotel Vijay Executive,  
Pune-Saswad Highway, Wadki,  
Tal : Haveli,  
Pune-412308, INDIA



## PLANT SETUP





## ABOUT US

Affordable Robotic & Automation Ltd. (ARAPL) is a Pune, India based company, leading in automation world from more than a decade serving in Automotive, Non-Automotive, General Industries & also in Government Sector. ARAPL has customer base in India, China & other parts of Asia

ARAPL is a Turnkey Automation Solution provider for all kind of Industrial Automation needs such as Line Automation, Assembly Line, Conveyor, Robotic Inspection Stations, Pick & Place Systems, Gantry, Auto Assembly stations, Robotic Welding Cell & Lines, Fixed, Indexing & Rotary type Welding fixtures, Spot, Mig, Tig Welding Robotic Cell, SPM's for Welding, Pneumatic, Hydraulic, Hydro-pneumatic SPM's, Jigs, Gauges & Fixtures. Automatic Car Parking System is also our major area of expertise

ARAPL is started by a technical expert, Mr. Milind Padole who is in this field since 25 Years

## ABOUT US

Establishment : 2005

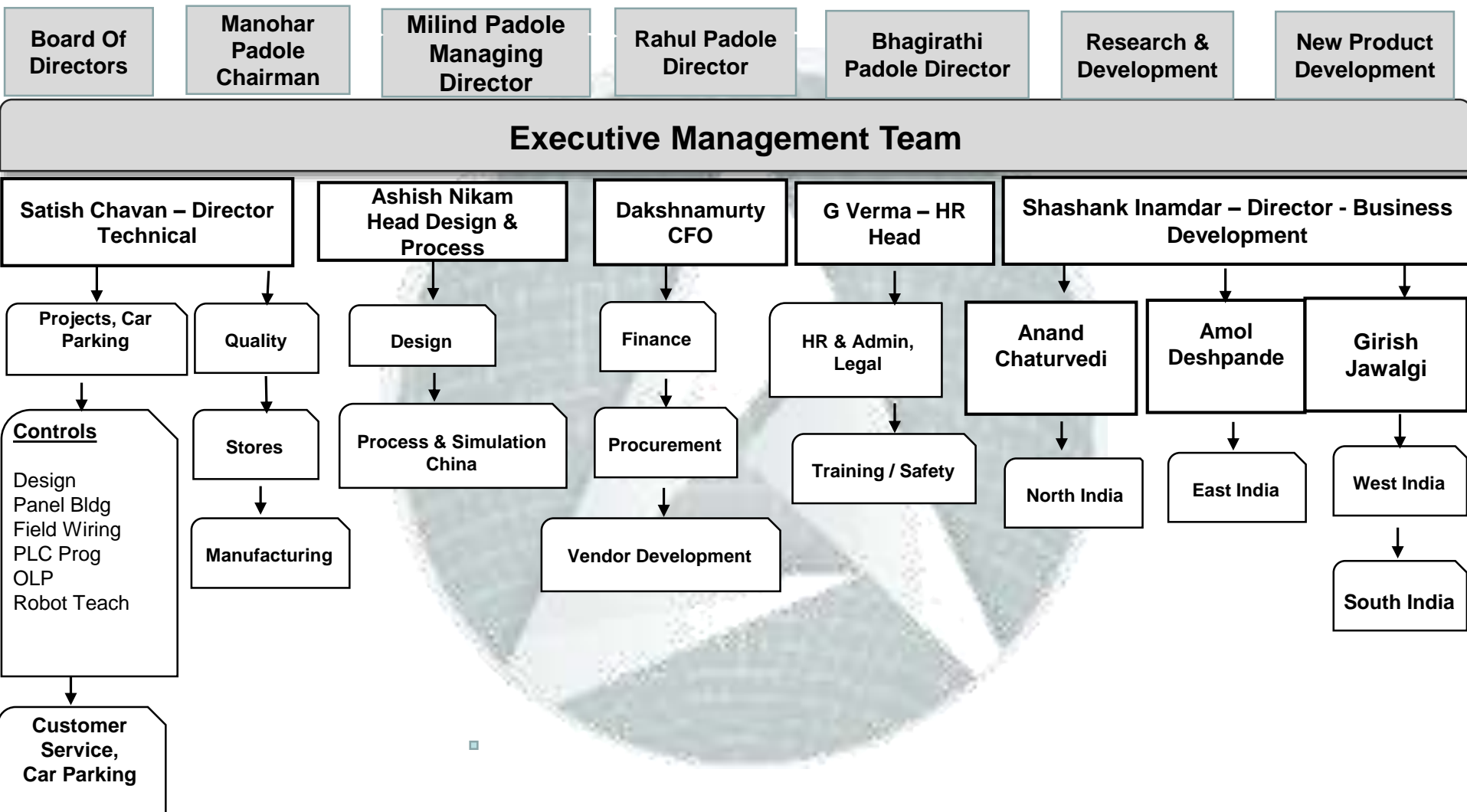
Work Space : 1,20,000 Sq.ft.

Employees : 300+

Turnover / Booking for 2018-19 : Above INR 70 Crore

- ☐ Engineering & Design
- ☐ Controls & Automation
- ☐ Project Management
- ☐ Process Study
- ☐ Layout Preparation
- ☐ Robotic Simulation
- ☐ Offline Programming
- ☐ Assembly
- ☐ Material Handling Design
- ☐ Ergonomic Study
- ☐ Bulk Storage System Design
- ☐ Quality & Certification
- ☐ Finance & Procurement
- ☐ HR & Administration
- ☐ Spares & Service Support
- ☐ Training

# ORGANISATION STRUCTURE



2019 : Technical JV with IKOMA Robotech Japan

2018 : Company is listed in stock exchange of India

2015 : Technology Tie-up with VDL, Netherland & CTD, Taiwan

2014 : New Manufacturing facility at Wadki, Pune

2012 : Sales & Service Office in Faridabad (North India)

2007 : Plant Expansion in Pune

2005 : ARAL Establishment





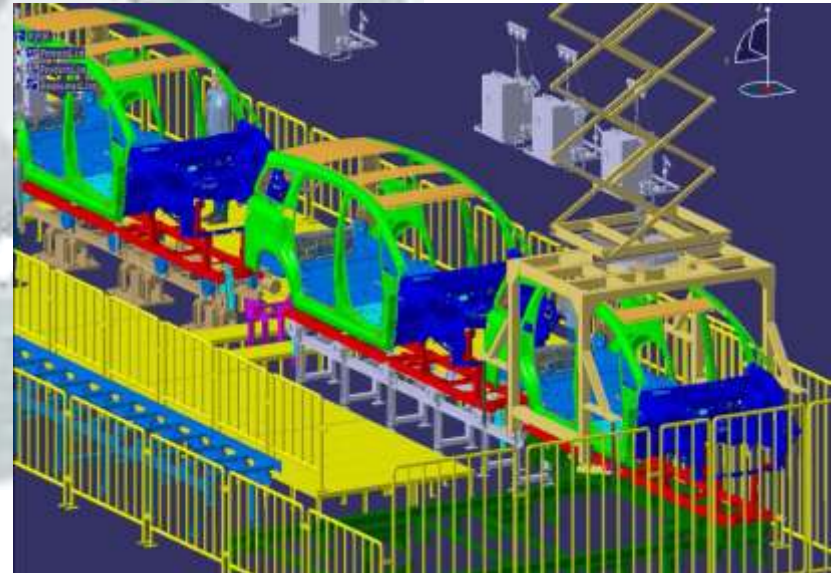
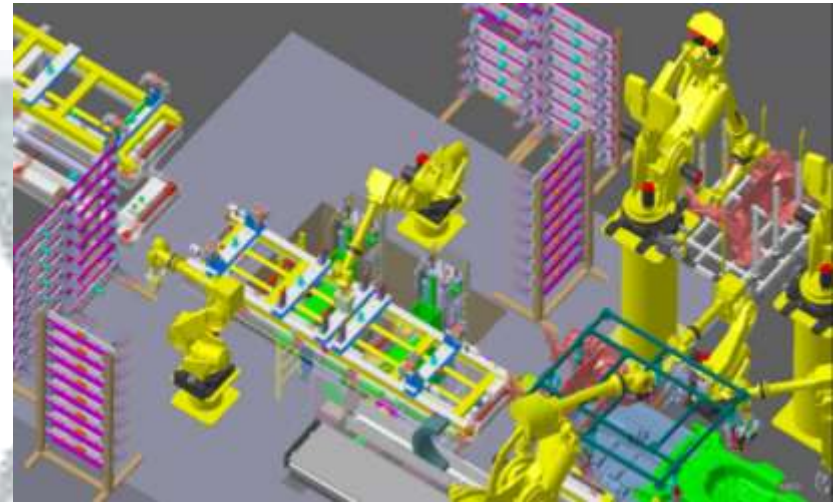
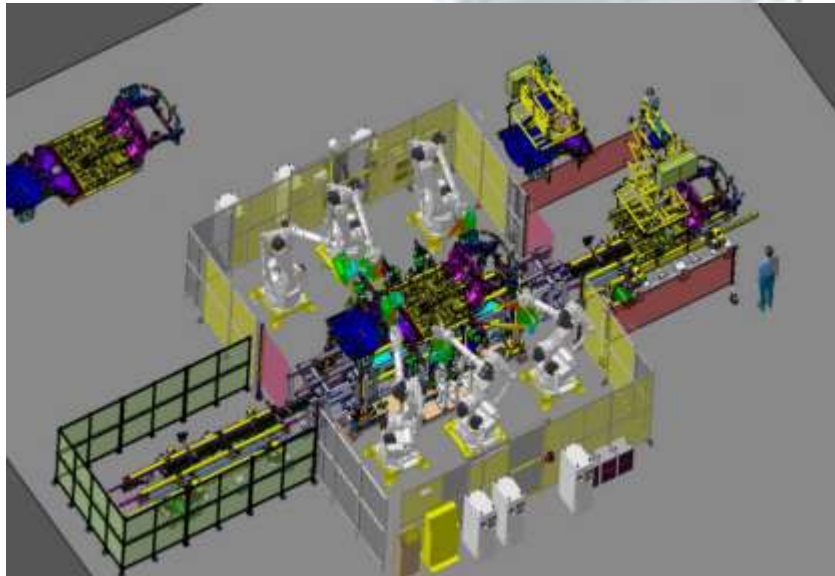
- 1) 1,20,000 Sq. Ft. Plant (1,00,000 Sq.Ft Shop-floor & 20,000 Sq.Ft. Office)
- 2) 400 KVA MSEB Power & 165 Kva Generator
- 3) 42 CFM Air Compressor with Dryer Unit (3 Nos)
- 4) 5 Ton Crane (1 No) & 3 Ton Cranes (3 Nos)
- 5) Portable CMM Machine 4 Nos
- 6) In-house Fabrication Shop, Paint shop & Store
- 7) Furnished office area of 200 seating capacity for mechanical & controls design, projects & robotics, support staff equipped with dedicated workstation, computers/Laptops
- 8) Meeting Rooms & Conference Halls
- 9) Server with Networking & dedicated 2Mbps Internet Lease line
- 10) Canteen facility for employees



## DESIGN CAPABILITIES

### Design & Simulation:

- Auto Cad
- Catia V5
- Solid Works
- Process Simulate
- Robostudio
- Motosim-EG
- Delmia V19



### **Automotive**

#### **Design and Manufacturing of Body-in-white lines include –**

- ☐ Main Body, Side Body, Under Body
- ☐ Framing / Cubing / Main Buck,

#### **Specialized in Closure lines including-**

- ☐ Robotic Roller Hemming
- ☐ Doors, Hood, Tail Gate, Trunk Lid

**BIW Lines-** Spot Welding Fixtures, MIG Welding Fixtures, SPM's, Robotic Cells, Pallet Changer, Welding Positioner, Lift & Shift Gantry, Slat & Roller Conveyors

### General Industries

#### Design and Manufacturing of –

- ☐ Intelligent storage systems
- ☐ Warehousing automation
- ☐ Conveying systems
- ☐ AGV & RGV
- ☐ Welding for Railway infrastructure
- ☐ Welding for Construction machinery
- ☐ Welding for agro equipment



## OUR CUSTOMER BASE



## OUR CUSTOMER BASE

**Mahindra CIE**



**PIAGGIO**  
VEHICLES PVT. LTD.



## PROJECT EXECUTED





## PROJECT EXECUTED



## PROJECT EXECUTED



## PROJECT EXECUTED





## PROJECT EXECUTED



## PROJECT EXECUTED





## PROJECT EXECUTED





## PROJECT EXECUTED



## PROJECT EXECUTED





## STAND APART

- **Automation Expertise**
- **BIW / MIG / Spot Domain Knowledge**
- **Application Specific Experts Team**
- **Capability to handle big size Turnkey Projects**
- **Standardization Policy**
- **Extensive Site Support Team**
- **Flexible Attitude**
- **Repeat Business : 85%**
- **24X7 Customer Support**
- **In-house Part Manufacturing Facility**
- **Satisfied Customers Base**
- **Active Involvement of Top Management in every case**
- **Open Culture to Adopt New Thing**
- **Young, Dynamic & Creative team**
- **Low Employee Turn-over**













## OUR PRESENCE

### HQ & Assembly Plant: ( Corporate Office )

**Affordable Robotic & Automation Ltd,**  
Gat No.1209, Near Hotel Vijay Executive,  
Pune-Saswad Highway, Wadki, Tal : Haveli,  
Pune-412308, INDIA

### North Sales Office :

**Affordable Robotic & Automation Ltd,**  
F-35, DLF Centre Point, Sector-11,  
Mathura Road, Faridabad-121007, INDIA

### Mumbai Sales Office :-

**Affordable Robotic & Automation Ltd,**  
A-435, Vashi Plaza, Sector 17, Next to  
Sion Panvel Highway, Vashi - 400703

## ***REACH US...***

**Shashank Inamdar**  
**Director - Business Development**

+91-7722059872  
[shashank.i@arapl.co.in](mailto:shashank.i@arapl.co.in)

**Amol Deshpande**  
**Vice President- Business Development**

+91-7720018949  
[amoldeshpande@arapl.co.in](mailto:amoldeshpande@arapl.co.in)

**Anand Chaturvedi**  
**Vice President-Marketing**

+91-9873020503 /  
[anand@arapl.co.in](mailto:anand@arapl.co.in)

**Girish Jawalgi**  
**Sr. GM-Marketing**

+91-7722087251  
[girish@arapl.co.in](mailto:girish@arapl.co.in)

*Thank  
you*

